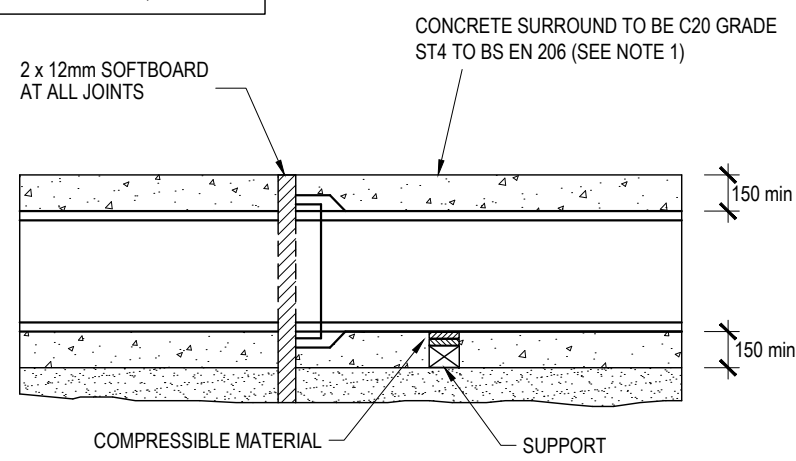
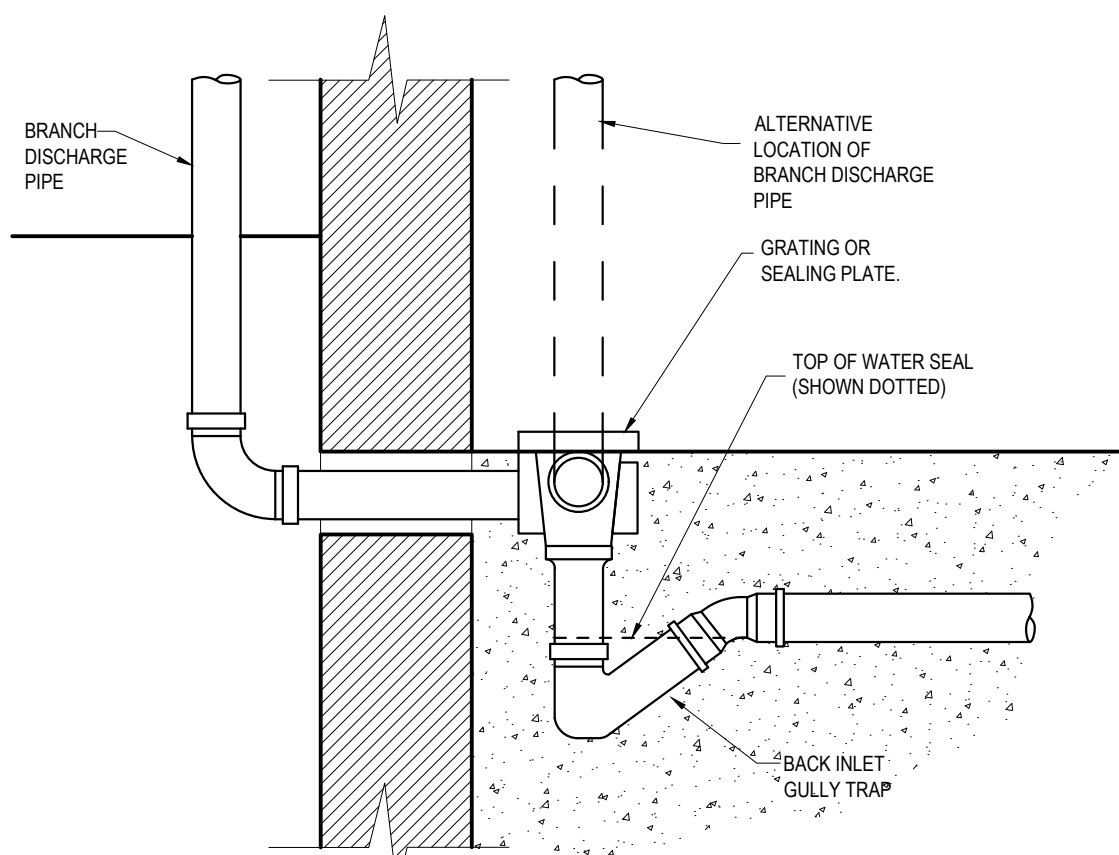


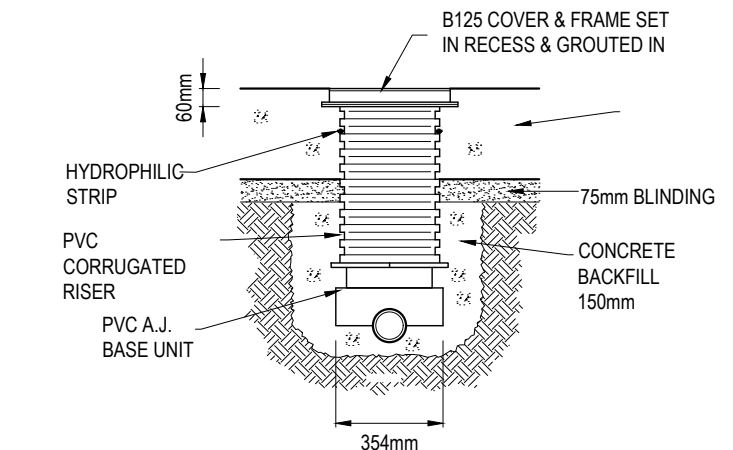
TYPE Z
CONCRETE BEDDING/SURROUND
(COVER 750mm - 1200mm)



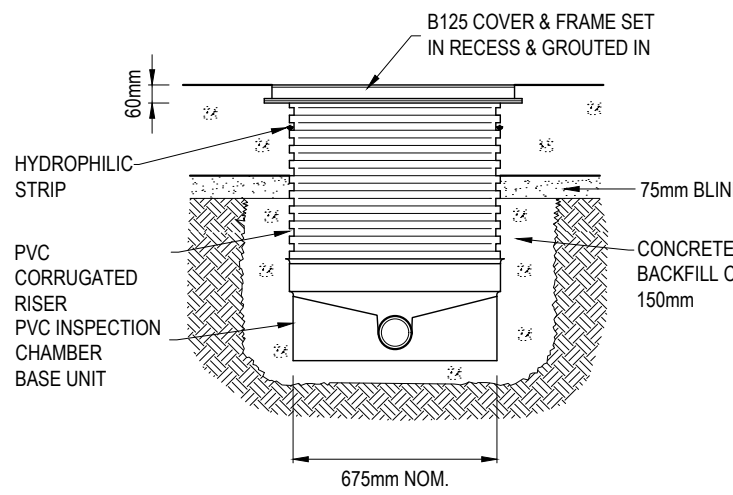
SECTION C - C



BACK INLET GULLY TRAP



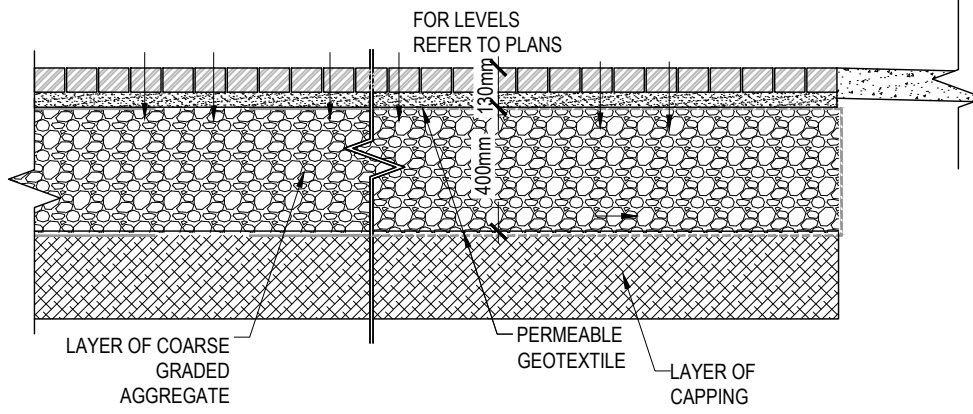
A.J. DETAIL(450mm MAX DEPTH)



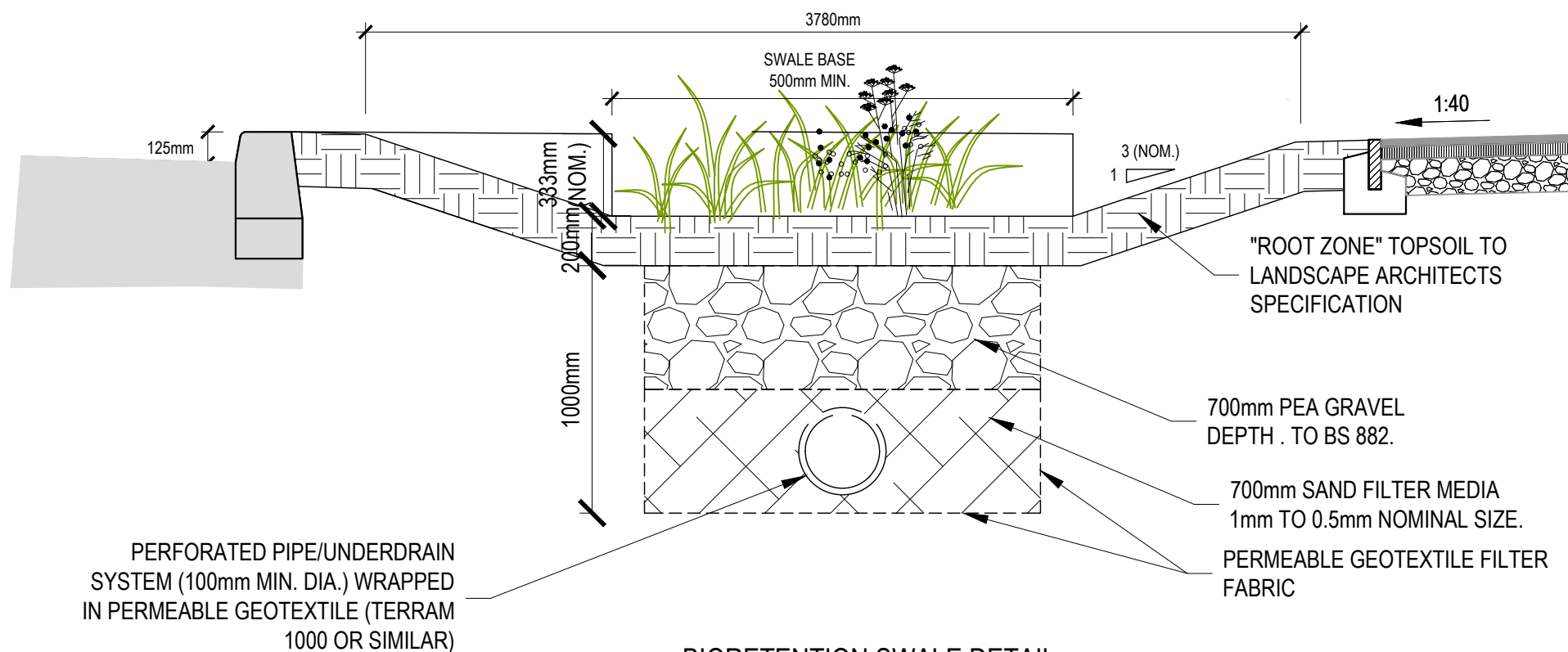
INSPECTION CHAMBER(1000mm MAX DEPTH)

PERMEABLE PAVING - (OUTSIDE OF PODIUM SLAB) :

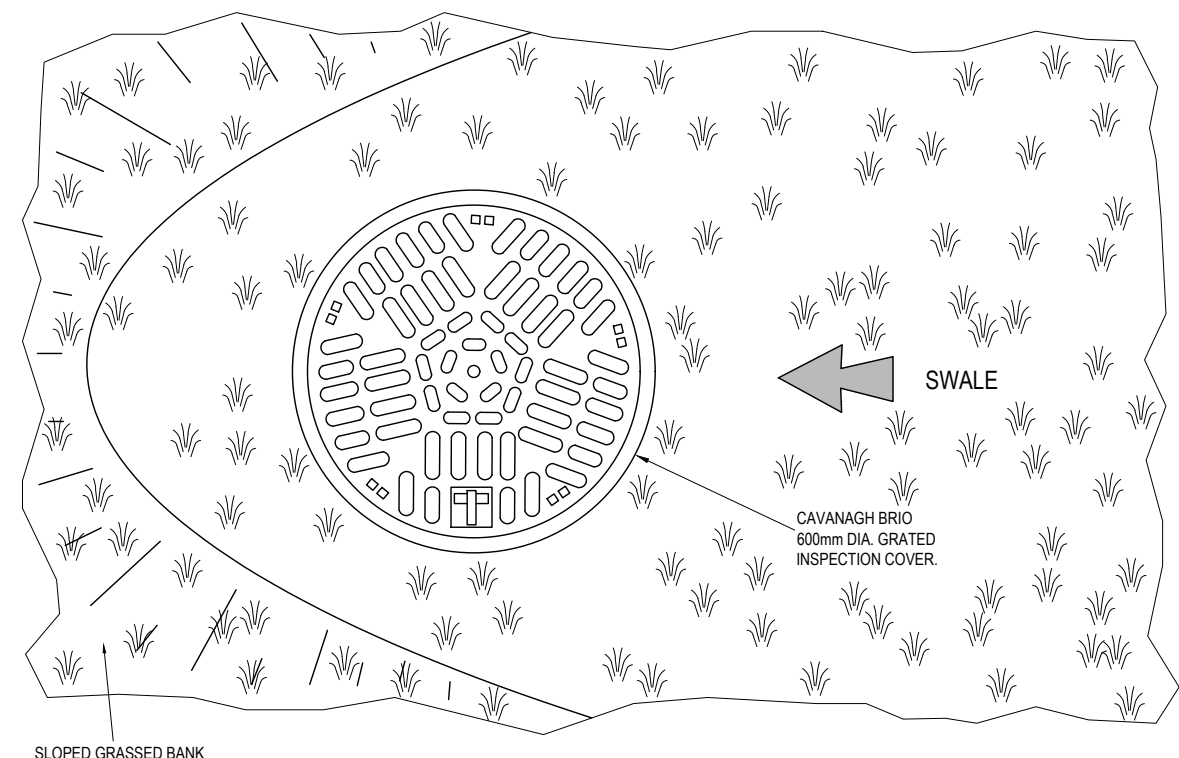
60mm PERMEABLE PAVING BLOCK to ARCHITECTS SPECIFICATION & APPROVAL & LAYING PATTERN ON 50mm LAYING COURSE MATERIAL OF 6.3-2mm GRIT TO BS EN 12424:2002 ON 250mm GRANULAR 4/20mm COARSE GRADED AGGREGATE TO BS EN 12424:2002 ON GEOTEXTILE FILTER FABRIC PERMEABLE GEOTEXTILE TO BS 7433 PART 13 ON 300mm CLASS 9F1/6P2 CAPPING (BASED ON SUB GRADE CBR VALUE OF 3%) (IF SUB GRADE CBR <3% USE TENSAR GEOGRID FOR STABILIZATION OR SIMILAR APPROVED SYSYEM.)



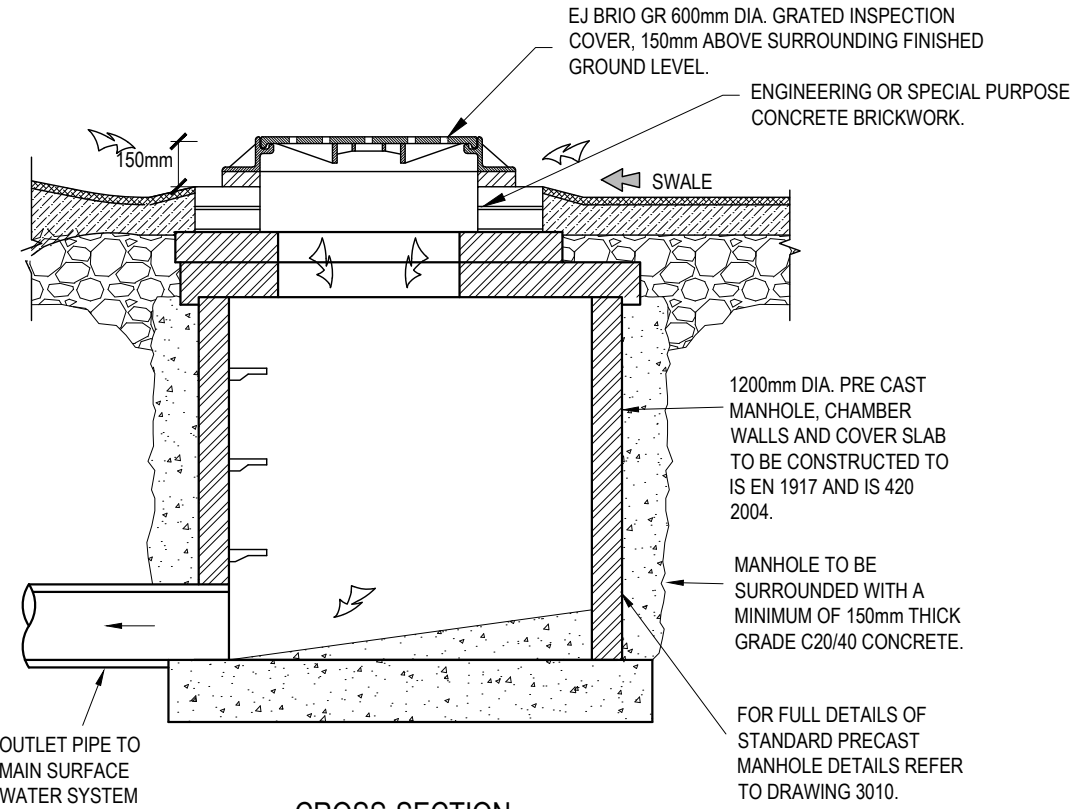
TYPICAL PERMEABLE PAVING SECTION



BIORETENTION SWALE DETAIL
SCALE: 1:25



GRATED MANHOLE PLAN
SCALE: N.T.S.



CROSS-SECTION

GRATED MANHOLE INLET CHAMBER
(FOR ROAD DRAINAGE)



© COPYRIGHT OF THIS DRAWING IS RESERVED BY DBFL CONSULTING ENGINEERS. NO PART SHALL BE REPRODUCED OR TRANSMITTED WITHOUT THEIR WRITTEN PERMISSION.

NO CHANGES OF WHATSOEVER NATURE ARE TO BE MADE TO ANY DETAILS SET OUT OR CONTAINED IN ANY DBFL SPECIFICATIONS OR DRAWINGS UNLESS THE EXPRESS CONSENT HAS BEEN OBTAINED IN ADVANCE, IN WRITING, FROM DBFL.

NOTES:

- WHERE ROCKS OR OTHER HARD TRENCH BOTTOM IS ENCOUNTERED, THE FIGURE DENOTED BY * IS TO BE DOUBLED.
- TYPE 1 GRANULAR MATERIAL :
BROKEN STONE OR GRAVEL TO PASS 10mm SIEVE AND BE RETAINED ON 5mm SIEVE.
- TYPE 2 GRANULAR MATERIAL :
BROKEN STONE OR GRAVEL TO PASS 10mm - 25mm SIEVE, ACCORDING TO PIPE SIZE, (SEE TABLE) AND BE RETAINED ON 5mm SIEVE.
- CLAUSE 601 S.R.W. BACKFILL :
UNIFORM READILY COMPACTED MATERIAL FREE FROM TREE ROOTS, VEGETABLE MATTER, BUILDING DEBRIS, AND FROZEN SOIL AND EXCLUDING CLAY LUMPS RETAINED ON A 75mm SIEVE AND STONES RETAINED ON A 37.5mm SIEVE.
- RIGID PIPES SHALL MEAN CAST OR SPUN IRON, CONCRETE OR CLAY.
- GULLY GRATINGS AND FRAMES SHALL COMPLY WITH THE REQUIREMENTS OF I.S./E.N./124 1994. GULLIES SHALL BE CLASS D400.
- GULLY WALLS SHALL BE CONSTRUCTED IN CLASS 30N/mm² PRECAST OR INSITU CONCRETE OR ALTERNATIVELY IN SOLID CONCRETE BLOCKS DESIGNATED S10, STRENGTH 10N/mm²
- ALL PIPES TO BE BEDDED IN ACCORDANCE WITH MANUFACTURERS RECOMMENDATIONS
- SURFACE WATER SEWERS TO BE CLASS H CONCRETE TO IS EN1916 AND IS 6 2004.

0	24-05-24	ISSUED FOR PLANNING	JVS	JPC
rev	date	description	by	chkd.

STATUS CODES	
purpose	acceptance
P3 - PLANNING PERMISSION	S - ISSUED

DBFL Consulting Engineers
Civil, Structural & Transportation Engineering
www.dbfl.ie

DUBLIN OFFICE: Ormond House, Upper Ormond Quay, Dublin 7, D07 W7H4
PHONE: +353 1 460 4000
CORK OFFICE: 14 South Mall, Cork, T12 CT91
PHONE: +353 21 2034338
WATERFORD OFFICE: Suite 20 The Atrium, Marlana Gate, Canale Street, Waterford, X91 W028
PHONE: +353 51 909 5050
GALWAY OFFICE: Orson House, 7 Eyre Square, Galway, H91 YNCS
PHONE: +353 91 35 55 00

project ref.

PARKLANDS POINTE

drawing title

TYPICAL DRAINAGE DETAILS - SHEET
2

client

GREENACRE RESIDENTIAL DAC

designed by	author	scale	sheet size
KJM	JVS	1:25	A1

drawing no.	revision
230133-X-05-Z00-DTM-DR-DBFL-CE-5302	0